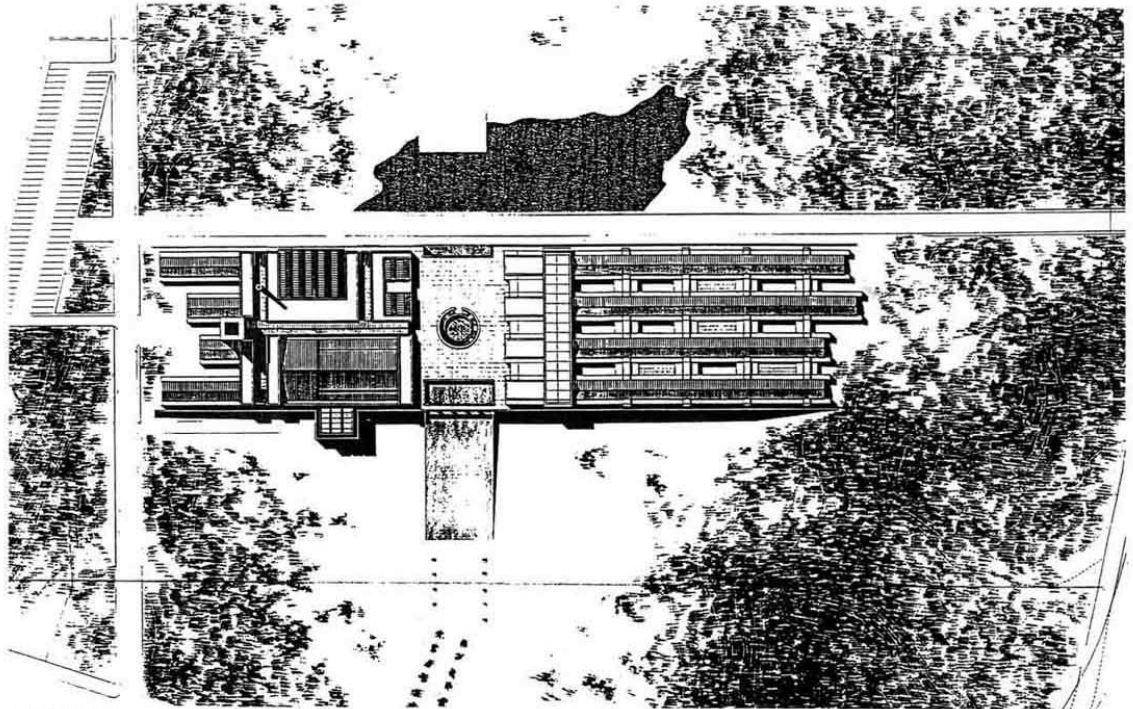
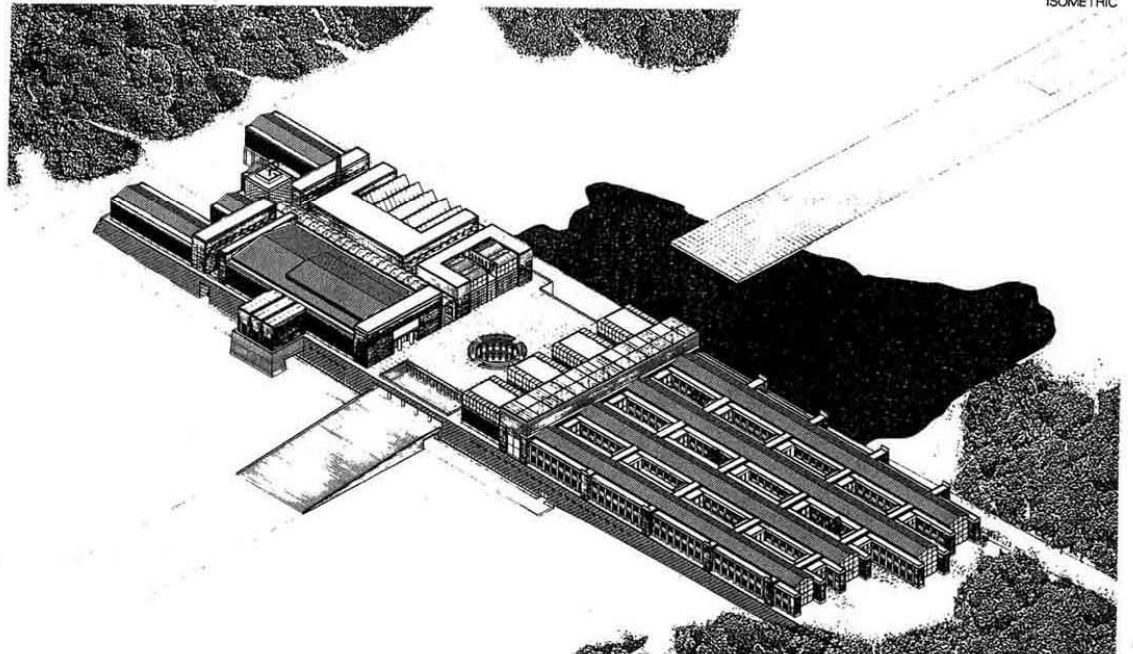


FRANCE  
FABRE XAVIER  
PUMAIN PHILIPPE  
SPELLER VINCENT  
KOREA  
MAN-WON HAN



MASTER PLAN

ISOMETRIC



**THE CONCEPT**

The National Museum of Korea is conceived as a city composed of contrasting edifices on a common base.

**Symbol**

As a city standing proudly on turrets set in a natural environment, the Museum represents cultural diversity and will take a "natural" place in city life.

**Geographic dimension**

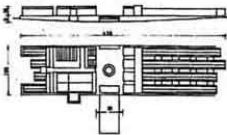
The museum acts as a dam which preserves the park and links the city centre to the Han river by means of a central esplanade. Elevated ramps also prevent any risk of flooding.

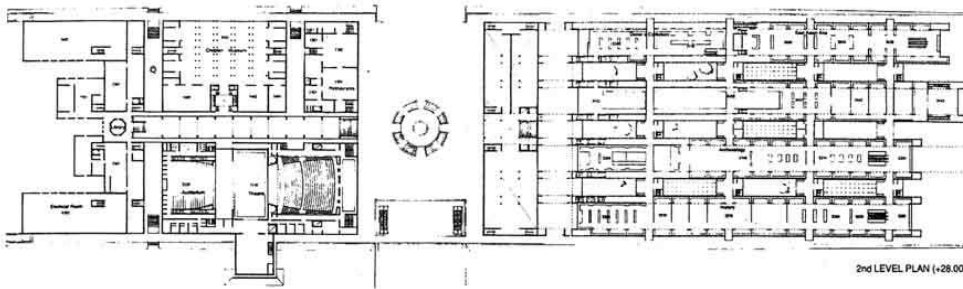
**General organisation**

The linearity of the project invites visitors to walk around. It also reproduces the traditional theme of a covered walkway mounted on a bridge. On either side of the esplanade and Main entrance Hall are distributed the exhibition galleries and service facilities for the cultural activities of the museum.

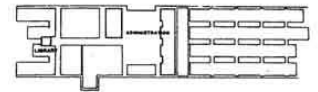
**Expression**

As the emblem of a culture, the museum seeks to transcend traditional forms of architecture by offering a timeless vision of the historical Korean city: basements, porches, roof-tops, interior courtyards, galleries, glass facades or brick walls. All these elements tend to link the contemporary vision with those of the past.





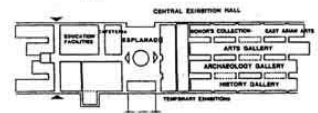
2nd LEVEL PLAN (+28.00)



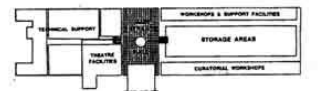
LEVEL 21.50



LEVEL 20.00



LEVEL 22.00

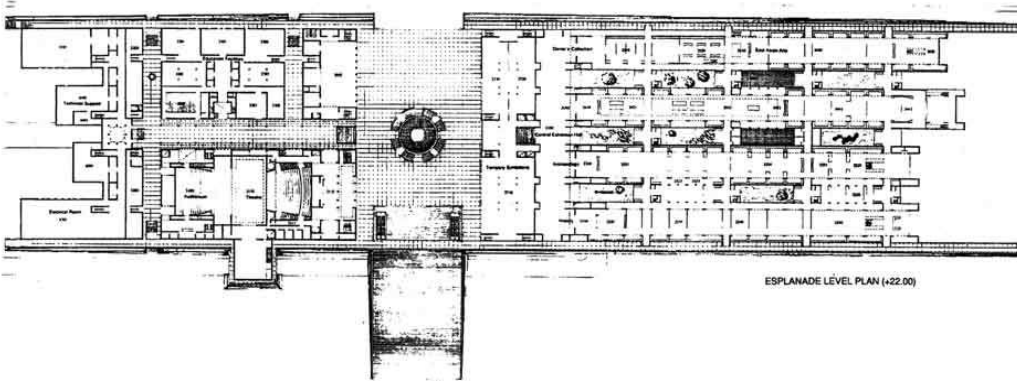


LEVEL 16.50



LEVEL 12.50

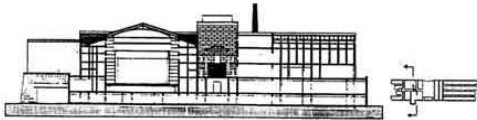
CONCEPT OF ORGANISATION



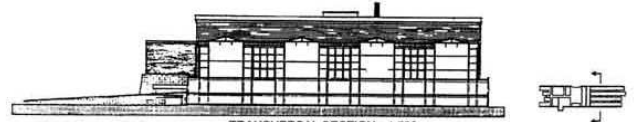
ESPLANADE LEVEL PLAN (+22.00)



LONGITUDINAL SECTION - 1:500



TRANSVERSAL SECTION - 1:500



TRANSVERSAL SECTION - 1:500



NORTH ELEVATION - 1:500



SOUTH ELEVATION - 1:500